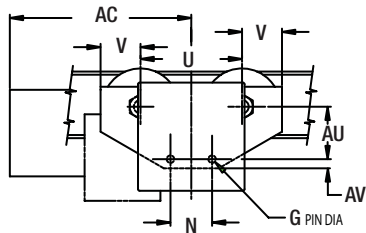
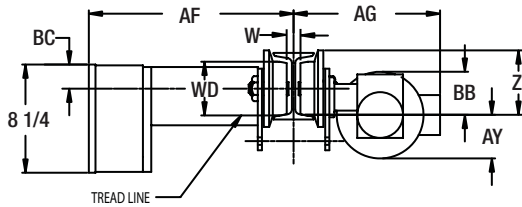


# Motor Driven Trolley

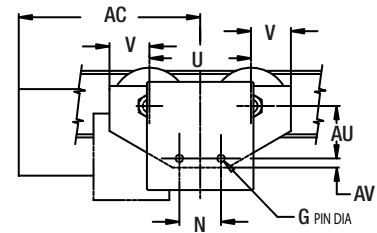
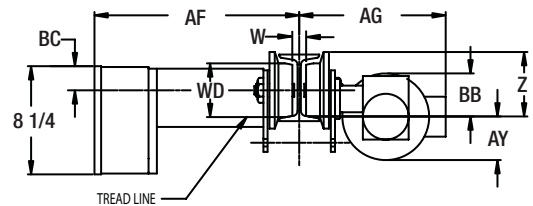


- Steel frame side plates extend beyond the wheels for end stop contacts. Side plates have tapped holes for collector bracket attachment. Optional safety drop stops and bumpers.
- Wheels are forged heat-treated steel with contour tread for use on American Standard I-beam or wide flange beams.
- Traverse motor is 30-minute rated, totally enclosed non-ventilated with class "F" insulation and TAS as standard.
- Traverse gearing is housed in a heavy duty right angle drive reducer with output pinion meshing with machine cut wheel gears.
- Trolley controls are housed in a NEMA 1 enclosed panel mounted on the trolley side for easy access. The controls include a reversing contractor, terminal strip and NEMA 4X pendant station with hoist and trolley push-button controls as standard.

## 1/4 to 1 & 2 ton



## 3 ton



## Specifications & Dimensions

Capacity	Model #	Standard Width Adjustment	Optional Flange Extended Adjustment		Trolley Speed	Optional Standard Speeds	Special Speed	Motor
			1st Extension	2nd Extension				
tons		in	in	in	FPM	FPM	FPM	HP
1/4 to 1	MDT01	3 to 5	5-1/8 to 7-1/4	7-1/2 to 9-1/8	75	50 & 100	25, 150	1/4
2	MDT02	3-5/8 to 6	6-1/4 to 8-5/8	8-7/8 to 11-1/4	60	40 & 80	30, 120	1/4
3	MDT03	4 to 6-1/4	6-3/8 to 8-5/8	8-3/4 to 11	50	75 & 100	25, 125	1/4

Capacity	Model #	AC	AF Max	AG Max	AU	AV	AY	BB Max	BC	G Dia	N	U	V	Z	WD	Min Radius
tons		in	in	in	in	in	in	in	in	in	in	in	in	in	in	ft.
1/4 to 1	MDT01	12	16-7/8	12-1/2	3-7/8	3/4	2-9/16	3-1/8	1-13/16	5/8	3-1/8	7-3/4	3	4-7/8	4	3
2	MDT02	12	16-7/8	12-1/2	4-1/8	1-15/16	1-15/16	2-1/16	2-7/16	1	5	9-1/8	3	4-7/8	4	5
3	MDT03	13-1/2	16-13/16	5-7/8	4-1/2	1-3/8	-	-	2-1/8	1-1/4	6	9-1/8	3-1/4	4-7/8	4	5

Always specify voltage when ordering. Voltages available: 115/230-1-60, 208-230/460-3-60, 575-3-60  
 115/230-1-60 is not available on trolleys for two speed hoists or two speed trolley.  
 Two speed trolleys have a 3:1 speed ratio. Standard pendant drop from trolley is 7 feet. Longer cables are available.  
 Trolleys are equipped with 3-foot length power supply cable. Longer lengths are available.